

# LaserLab HR3D

## LaserLab HR3D perfectly suitable for the exposure of lenticular and standard professional images

When the image is rasterized to match a lenticular sheet, it requires to be exposed at a very high and very specific resolution. A standard 600-800-1000dpi could be unsuitable for this kind of exposure.

The LaserLab HR is equipped with an unbelievable exposure engine, capable of adjusting its resolution within 1/100 of a DPI! In addition, the continuous tone exposure warrants a perfect photographic results.

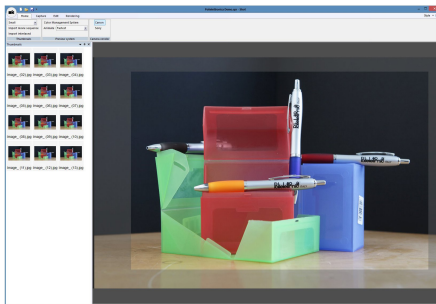


The LaserLab, managed by **Imagelab 7**, is a complete machine capable of giving high quality and high volume standard production, as well images for 3D. The built in PITCH test tool makes matching between resolution and lenticular sheets extremely simple. The enhancement tools for the images rasterized by the Polieletronica SHOT software allows reaching the best result with 3D and lenticular images .

**The SHOT software:** it's the perfect tool for managing and editing the 3D or lenticular composition.

Its license is included with the LaserLab HR3D

It can be installed on a laptop or a standard pc. It can drive the 3D Shooter directly, so it's possible to finalize a 3D image right after the the shooting sequence is completed. The output size, the LPI sheet to be used and the cropping of the 3D layout can be easily defined. Every project can be re-opened and re-edited at any time in a few seconds. The position of the parallax can be changed to give to the final image the depth required or to change the point of focus of the composition.



**Polieletronica®**